

FIRE SAFETY **WHEN** **CELEBRATING**



**FIRE
KILLS**

LET'S PREVENT IT



Did you know?

- **850 accidental fires in the home are started every year in England from candles.**
- **Around 150 fires in England are started by fireworks every year.**

Enjoy celebrations safely by following the simple tips in this leaflet.



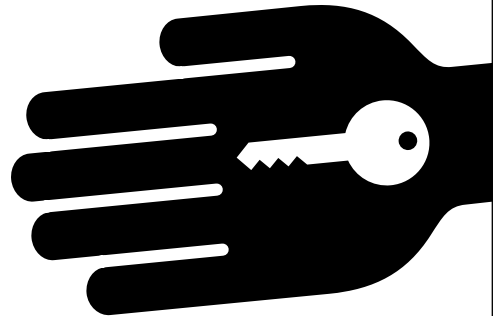
Having a party

Inform your guests of the best route to escape just in case.

- Take special care of older people, children and those who may find it difficult to get out if there is a fire.
- Put out enough ashtrays, so ash and cigarette butts don't get put in wastepaper bins.
- Encourage guests who wish to smoke to do so outdoors and to put cigarettes right out.

- Tell guests who are staying overnight where the door keys are kept, in case they need to escape.
- Take extra care when drinking alcohol.

Keep keys where you can find them in case you need them in a hurry.



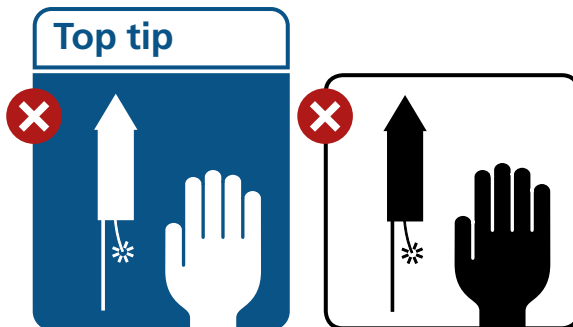
Show guests the escape route



Fireworks

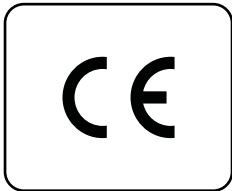
Never go back to a lit firework – even if it hasn't gone off it could still explode. It is safer to attend organised public firework displays.

- Never throw fireworks or put them in your pocket.
- Don't drink alcohol if you're setting off fireworks.
- Store fireworks in a closed box and take them out one at a time.
- Keep a bucket of water nearby.
- Follow the instructions on each firework. Use a torch to read them – never a naked flame.
- Light fireworks at arm's length, using the taper provided.
- Make sure everyone stands well back.
- Always supervise children around fireworks and never give sparklers to a child under five.
- Light sparklers one at a time and wear gloves.
- Keep pets indoors.



Turn appliances off properly after use

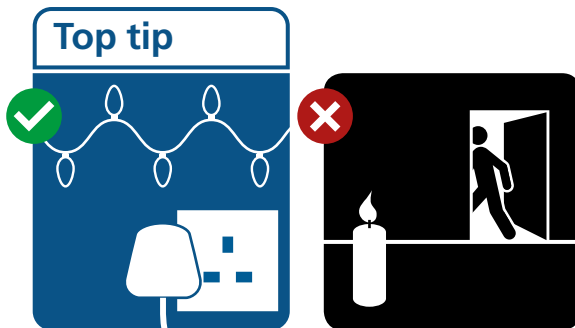
- Take care around open flames such as bonfires and barbecues – even clothes labelled ‘low flammability’ can catch fire.
- Keep bonfires away from things that may catch fire.
- Only buy fireworks marked with a CE marking (showing they conform to European safety standards).



Fairy lights, candles and decorations

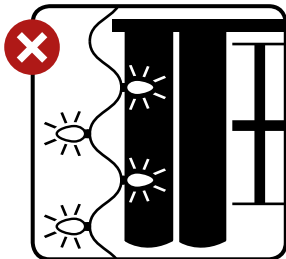
Unplug fairy lights when you leave your home or go to bed. Never overload electrical sockets.

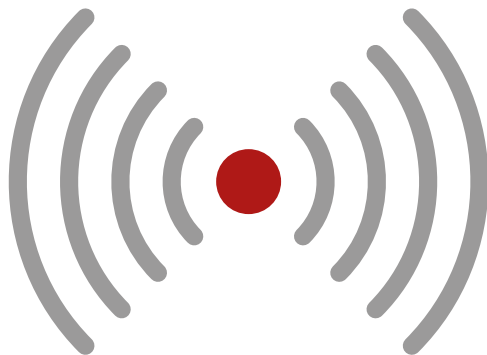
- Keep candles away from things that might catch fire, like Christmas trees, greeting cards, ribbons and other decorations.
- Ensure matches and lighters are returned to a safe place once candles have been lit.
- Put candles out when you leave the room, and make sure they're put out completely at night.
- Consider using LED lights or battery-operated candles.



**Unplug
fairy lights**

- Check fairy lights are in good working order and replace any bulbs that blow.
- Don't let bulbs touch anything that can burn easily, such as paper or fabrics.
- Make sure the fuse in the plug is the right size (check the box for advice).





SMOKE ALARMS

**SAVE
LIVES**

To find out more about fireworks and the law visit **www.gov.uk/fireworks-the-law**
For advice specific to you and your home, visit **www.ohfsc.co.uk** and complete your own home fire safety check.

FS080 ©Crown Copyright 2021.
Published by the Home Office. November 2021.
Version 4

ISBN 978-1409846017



9 781409 846017